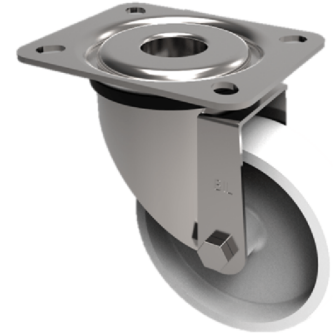


Polypropylene Plate Swivel Castor 80mm 90kg Load

Product code: BZMM80PLB



pressed steel swivel castor with top plate fixing fitted with a white polypropylene wheel with roller bearing. Wheel diameter 80mm, tread width 32mm, overall height 105mm, top plate 105mm x 85mm, hole centres 80mm x 60mm. Load capacity 90kg.

Diameter (mm)	80
Castor Type	Swivel
Fixing Option	Plate
Height (mm)	105
Wheel Material	Polypropylene
Colour / Shore Hardness	White Polypropylene
Temperature Resistance	-20 °C TO +80 °C
Bearing Type	Roller
Load Capacity (kg)	90
Tread (mm)	32
Swivel Radius (mm)	78
Plate Size (mm)	105 X 85
Hole Centres (mm)	80 X 60
Top Plate Thickness (mm)	2
Fork Thickness (mm)	2
To Suit Fixing Bolt (mm)	8

BIL GROUP LTD

Porte Marsh Road, Calne, Wiltshire, SN11 9BW

Registered in England No: 2603821

VAT Reg: GB572705729

