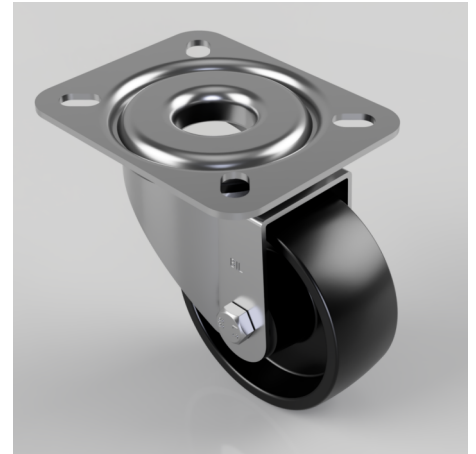


Polypropylene Plate Swivel Castor 80mm 110kg Load

Product code: BZRMM80PLB/BLK

pressed steel swivel castor with top plate fixing fitted with a black polypropylene wheel with roller bearing. Wheel diameter 80mm, tread width 32mm, overall height 100mm, top plate 104mm x 80mm, hole centres 80mm x 60mm or 72mm x 52mm. Load capacity 110kg.



Diameter (mm)	80
Castor Type	Swivel
Fixing Option	Plate
Height (mm)	100
Wheel Material	Polypropylene
Colour / Shore Hardness	Black Polypropylene
Temperature Resistance	-20 °C TO +80 °C
Bearing Type	Roller
Load Capacity (kg)	110
Tread (mm)	32
Swivel Radius (mm)	74
Plate Size (mm)	105 X 85
Hole Centres (mm)	80/72 x 60/52
Top Plate Thickness (mm)	2.5
Fork Thickness (mm)	2
To Suit Fixing Bolt (mm)	8

BIL GROUP LTD

Porte Marsh Road, Calne, Wiltshire, SN11 9BW

Registered in England No: 2603821

VAT Reg: GB572705729

