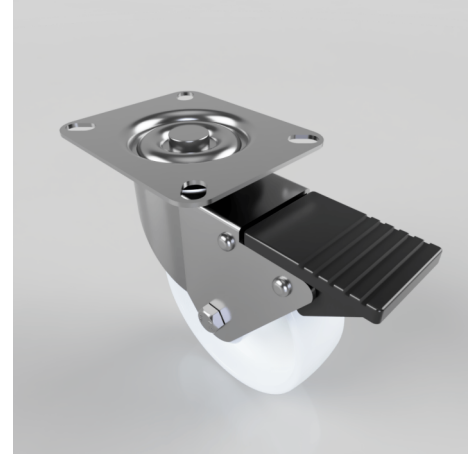


## Polypropylene Plate Swivel Castor Brake 100mm 125kg Load

**Product code: BZBC100PLBSWB**

Pressed steel swivel castor with a top plate fixing fitted with a white polypropylene wheel with a roller bearing and swivel wheel brake. Wheel diameter 100mm, tread width 32mm, overall height 126mm, plate size 102mm x 84mm, hole centres 80mm x 60mm. Load capacity 125kg.



Diameter (mm)	100
Fixing Option	Plate
Castor Type	Swivel with Total Lock Brake
Plate Size (mm)	102 x 84
Hole Centres (mm)	80 X 60
Height (mm)	126
Bearing Type	Roller
Swivel Radius (mm)	115
Wheel Material	Polypropylene
Colour / Shore Hardness	White Polypropylene
Top Plate Thickness (mm)	2
Fork Thickness (mm)	2
Temperature Resistance	-20 °C TO +80 °C
To Suit Fixing Bolt (mm)	8
Tread (mm)	32
Load Capacity (kg)	125

### BIL GROUP LTD

Porte Marsh Road, Calne, Wiltshire, SN11 9BW

Registered in England No: 2603821

VAT Reg: GB572705729

