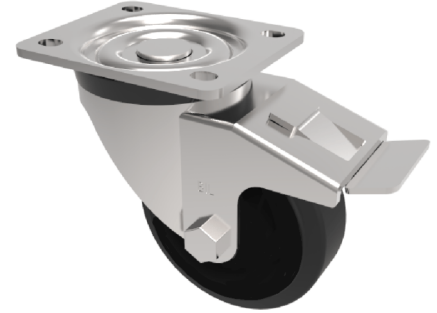


## Polypropylene Plate Swivel Castor Brake 125mm 140kg Load

**Product code: BZMM125PLBSWB/BLK**



Pressed steel swivel castor with a top plate fixing fitted with a black polypropylene wheel with roller bearing bore and total lock brake. Wheel diameter 125mm, tread width 40mm, overall height 155mm, top plate 105mm x 85mm, hole centres 80mm x 60mm. Load capacity 140kg.

Diameter (mm)	125
Castor Type	Swivel with Total Lock Brake
Fixing Option	Plate
Height (mm)	155
Wheel Material	Polypropylene
Colour / Shore Hardness	Black Polypropylene
Temperature Resistance	-20 °C TO +80 °C
Bearing Type	Roller
Load Capacity (kg)	140
Tread (mm)	40
Swivel Radius (mm)	135
Plate Size (mm)	105 X 85
Hole Centres (mm)	80 X 60
Top Plate Thickness (mm)	2
Fork Thickness (mm)	2
To Suit Fixing Bolt (mm)	8