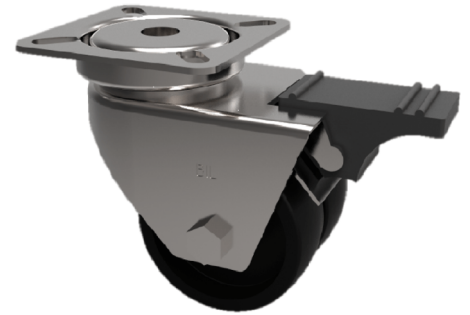


Polypropylene Plate Swivel Castor Brake 50mm 60kg Load

Product code: 2BZA50PLSWB



Twin wheeled pressed steel swivel castor with a top plate fixing fitted with 2 black polypropylene wheels with plain bores and total lock brake. Wheel diameter 50mm, tread width 2 x 20mm, overall height 73mm, plate size 60mm x 60mm, hole centres 46mm x 46mm Load capacity 60kg.

Diameter (mm)	50
Fixing Option	Plate
Castor Type	Swivel with Total Lock Brake
Plate Size (mm)	60 x 60
Hole Centres (mm)	46 x 46
Height (mm)	73
Bearing Type	Plain
Swivel Radius (mm)	83
Wheel Material	Polypropylene
Colour / Shore Hardness	Black Polypropylene
Top Plate Thickness (mm)	2
Fork Thickness (mm)	2
Temperature Resistance	-15 °C TO +80 °C
To Suit Fixing Bolt (mm)	6
Tread (mm)	2 x 18
Load Capacity (kg)	60