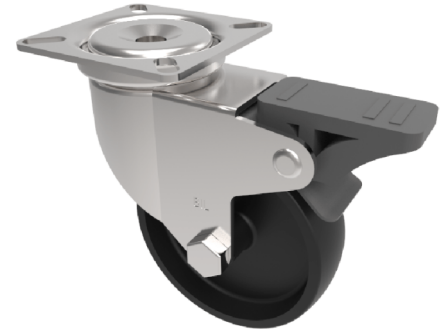


Polypropylene Plate Swivel Castor Brake 75mm 50kg Load

Product code: BZA75PLSWB



Pressed steel swivel castor with top plate fixing fitted with a black polypropylene wheel with plain bore and total lock brake. Wheel diameter 75mm, tread width 22mm, overall height 101mm, plate size 60mm x 60mm, hole centres 46mm x 46. Load capacity 50kg.

Diameter (mm)	75
Fixing Option	Plate
Castor Type	Swivel with Total Lock Brake
Plate Size (mm)	60 x 60
Hole Centres (mm)	46 x 46
Height (mm)	101
Bearing Type	Plain
Swivel Radius (mm)	92
Wheel Material	Polypropylene
Colour / Shore Hardness	Black Polypropylene
Top Plate Thickness (mm)	2
Fork Thickness (mm)	2
Temperature Resistance	-15 °C TO +80 °C
To Suit Fixing Bolt (mm)	6
Tread (mm)	22
Load Capacity (kg)	50

BIL GROUP LTD

Porte Marsh Road, Calne, Wiltshire, SN11 9BW

Registered in England No: 2603821

VAT Reg: GB572705729

