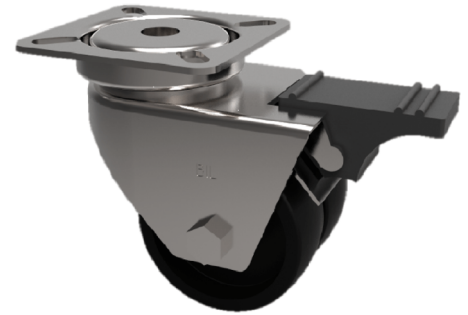


Polypropylene Plate Swivel Castor Brake 75mm 80kg Load

Product code: 2BZA75PLSWB



Twin wheeled pressed steel swivel castor with a top plate fixing fitted with 2 black polypropylene wheels with plain bores and total lock brake. Wheel diameter 75mm, tread width 2 x 22mm, overall height 101mm, plate size 60mm x 60mm, hole centres 46mm x 46mm Load capacity 80kg.

Diameter (mm)	75
Fixing Option	Plate
Castor Type	Swivel with Total Lock Brake
Plate Size (mm)	60 x 60
Hole Centres (mm)	46 x 46
Height (mm)	101
Bearing Type	Plain
Swivel Radius (mm)	97
Wheel Material	Polypropylene
Colour / Shore Hardness	Black Polypropylene
Top Plate Thickness (mm)	2.5
Fork Thickness (mm)	2
Temperature Resistance	-15 °C TO +80 °C
To Suit Fixing Bolt (mm)	6
Tread (mm)	2 x 18
Load Capacity (kg)	60