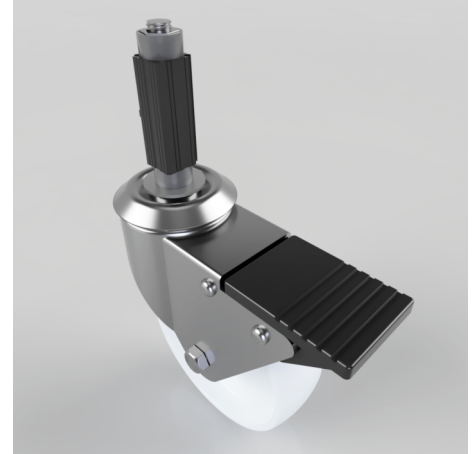


Polypropylene Swivel Braked Expander 100mm 125kg

Product code: BZBC100PLSWBEXS18

Pressed steel swivel castor fitted with a 18.5mm to 21mm square expander and a white polypropylene wheel with a plain bore and total lock brake. Wheel diameter 100mm, tread width 30mm, overall height 126mm, Load capacity 125kg.



Height (mm)	128
Tread (mm)	32
Bearing Type	Plain
Diameter (mm)	100
Wheel Material	Polypropylene
Fixing Option	Bolt Hole, Expander
Castor Type	Swivel with Total Lock Brake
Load Capacity (kg)	125
Swivel Radius (mm)	115
Expander Type (mm)	Square Expander to Suit 18.5 - 21
Fork Thickness (mm)	2
Head Dia (mm)	60
Colour / Shore Hardness	White Polypropylene
Temperature Resistance	-15 °C TO +60 °C

BIL GROUP LTD

Porte Marsh Road, Calne, Wiltshire, SN11 9BW

Registered in England No: 2603821

VAT Reg: GB572705729

