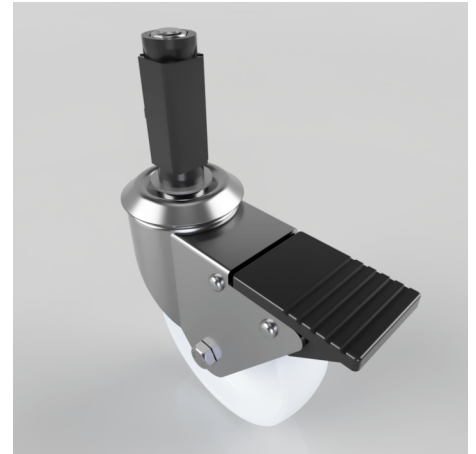


Polypropylene Swivel Braked Expander 100mm 125kg

Product code: BZBC100PLSWBEXS21

Pressed steel swivel castor fitted with a 21.5mm to 24mm square expander and a white polypropylene wheel with a plain bore and total lock brake. Wheel diameter 100mm, tread width 30mm, overall height 126mm, Load capacity 125kg.



| | |
|-------------------------|-----------------------------------|
| Height (mm) | 128 |
| Tread (mm) | 32 |
| Bearing Type | Plain |
| Diameter (mm) | 100 |
| Wheel Material | Polypropylene |
| Fixing Option | Bolt Hole, Expander |
| Castor Type | Swivel with Total Lock Brake |
| Load Capacity (kg) | 125 |
| Swivel Radius (mm) | 115 |
| Expander Type (mm) | Square Expander to Suit 21.5 - 24 |
| Fork Thickness (mm) | 2 |
| Head Dia (mm) | 60 |
| Colour / Shore Hardness | White Polypropylene |
| Temperature Resistance | -15 °C TO +60 °C |