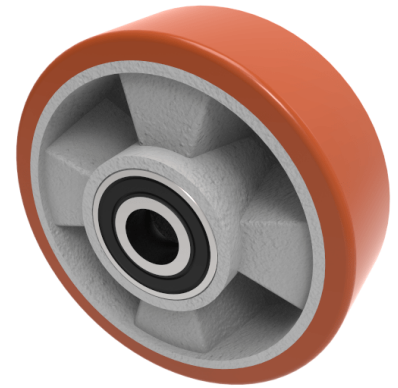


Polyurethane Aluminium 100mm Ball Bearing Wheel 250kg Load

Product code: BZH100WPABJM12

Yellow polyurethane tyre on aluminium centred wheel with ball bearings. Diameter 100mm, tread width 40mm, bore size 12mm, hub length 40mm. Load capacity 250kg.

****MANUFACTURED TO ORDER****



Bearing Type	Ball
Bore Size (mm)	12
Diameter (mm)	100
Hub Width (mm)	40
Load Capacity (kg)	250
Tread (mm)	40
Wheel Material	Polyurethane on Aluminium
Colour / Shore Hardness	Brown Polyurethane on Aluminium Rim / 93 Shore A
Temperature Resistance	-20 °C TO +70 °C

BIL GROUP LTD

Porte Marsh Road, Calne, Wiltshire, SN11 9BW

Registered in England No: 2603821

VAT Reg: GB572705729

