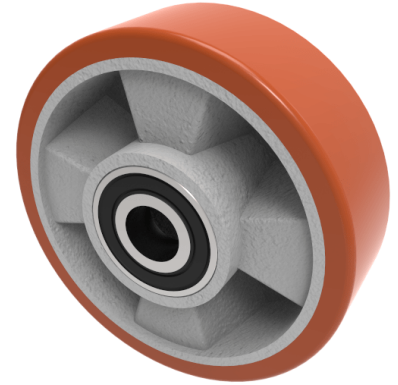


Polyurethane Aluminium 160mm Ball Bearing Wheel 500kg Load

Product code: BZH160WPABJM25

160mm diameter brown polyurethane tyred on a aluminium centred wheel with a ball bearing. Tread width 50mm, bore 25mm, hub 60mm. Load capacity 500kg.



Bearing Type	Ball
Bore Size (mm)	25
Diameter (mm)	160
Hub Width (mm)	60
Load Capacity (kg)	500
Tread (mm)	50
Wheel Material	Polyurethane on Aluminium
Colour / Shore Hardness	Brown Polyurethane on Aluminium Rim / 93 Shore A
Temperature Resistance	-20 °C TO +70 °C

BIL GROUP LTD

Porte Marsh Road, Calne, Wiltshire, SN11 9BW

Registered in England No: 2603821

VAT Reg: GB572705729

