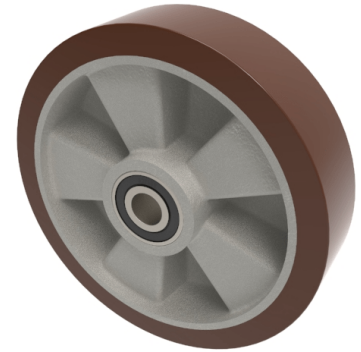


Polyurethane Aluminium 200mm Ball Bearing Wheel 800kg Load

Product code: BZH200WPABJM20



200mm diameter brown polyurethane tyred on an aluminium centred wheel with a ball bearing. Tread width 50mm, bore 20mm, hub 60mm. Load capacity 800kg.

Bearing Type	Ball
Bore Size (mm)	20
Diameter (mm)	200
Hub Width (mm)	60
Load Capacity (kg)	800
Tread (mm)	50
Wheel Material	Polyurethane on Aluminium
Colour / Shore Hardness	Brown Polyurethane on Aluminium Rim / 93 Shore A
Temperature Resistance	-20 °C TO +70 °C

BIL GROUP LTD

Porte Marsh Road, Calne, Wiltshire, SN11 9BW

Registered in England No: 2603821

VAT Reg: GB572705729

