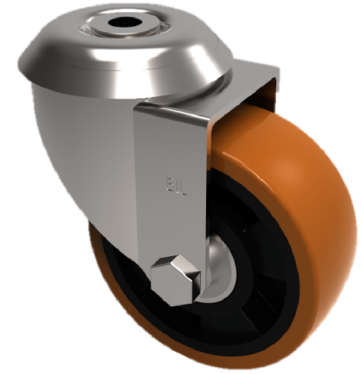


Polyurethane Aluminium Bolt Hole Swivel Castor 125mm 300kg Load

Product code: BZH125PABJBH12

Pressed steel swivel castor with a 12mm bolt hole fixing fitted with a polyurethane tyre on aluminium centred wheel. Wheel diameter 125mm, tread width 40mm, overall height 155mm. Load capacity 300kg.



Diameter (mm)	125
Castor Type	Swivel
Fixing Option	Bolt Hole
Height (mm)	155
Wheel Material	Polyurethane on Aluminium
Colour / Shore Hardness	Brown Polyurethane on Aluminium Rim / 93 Shore A
Temperature Resistance	-20 °C TO +70 °C
Bearing Type	Ball
Load Capacity (kg)	300
Tread (mm)	40
Swivel Radius (mm)	104
Head Dia (mm)	76
Fork Thickness (mm)	4
To Suit Fixing Bolt (mm)	12

BIL GROUP LTD

Porte Marsh Road, Calne, Wiltshire, SN11 9BW

Registered in England No: 2603821

VAT Reg: GB572705729

