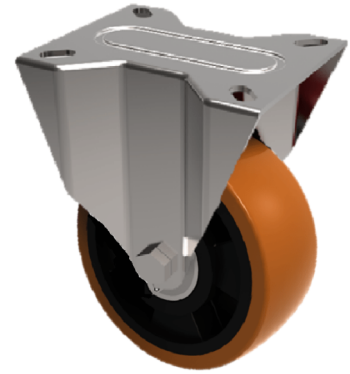


## Polyurethane Aluminium Plate Fixed Castor 160mm 500kg Load

**Product code: BZPF160PABJ**

Pressed steel fixedl castor with a flat plate fixing fitted with a brown polyurethane tyred on aluminium centred wheel with a ball bearing. Wheel diameter 160mm, tread width 50mm, overall height 199mm, plate size 135mm x 100mm, hole centres 105mm x 80mm. Load capacity 500kg.



Diameter (mm)	160
Castor Type	Fixed
Fixing Option	Plate
Height (mm)	199
Wheel Material	Polyurethane on Aluminium
Colour / Shore Hardness	Brown Polyurethane on Aluminium Rim / 93 Shore A
Temperature Resistance	-20 °C TO +70 °C
Bearing Type	Ball
Load Capacity (kg)	500
Tread (mm)	50
Plate Size (mm)	135 x 110
Hole Centres (mm)	105 x 80
Top Plate Thickness (mm)	6
Fork Thickness (mm)	4
To Suit Fixing Bolt (mm)	12

### BIL GROUP LTD

Porte Marsh Road, Calne, Wiltshire, SN11 9BW

Registered in England No: 2603821

VAT Reg: GB572705729

