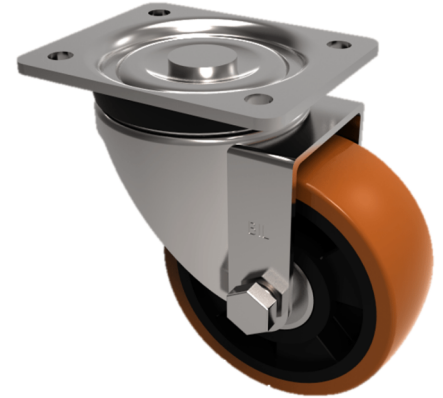


Polyurethane Aluminium Plate Swivel Castor 100mm 250kg Load

Product code: BZH100PABJ

Pressed steel swivel castor with a flat plate fixing fitted with a brown polyurethane tyred on aluminium centred wheel with a ball bearings. Wheel diameter 100mm, tread width 40mm, overall height 128mm, plate size 105mm x 86mm, hole centres 80mm x 60mm. Load capacity 250kg.



Diameter (mm)	100
Castor Type	Swivel
Fixing Option	Plate
Height (mm)	128
Wheel Material	Polyurethane on Aluminium
Colour / Shore Hardness	Brown Polyurethane on Aluminium Rim / 93 Shore A
Temperature Resistance	-20 °C TO +70 °C
Bearing Type	Ball
Load Capacity (kg)	250
Tread (mm)	40
Swivel Radius (mm)	90
Plate Size (mm)	105 x 86
Hole Centres (mm)	80 X 60
Top Plate Thickness (mm)	4
Fork Thickness (mm)	4
To Suit Fixing Bolt (mm)	8

BIL GROUP LTD

Porte Marsh Road, Calne, Wiltshire, SN11 9BW

Registered in England No: 2603821

VAT Reg: GB572705729

