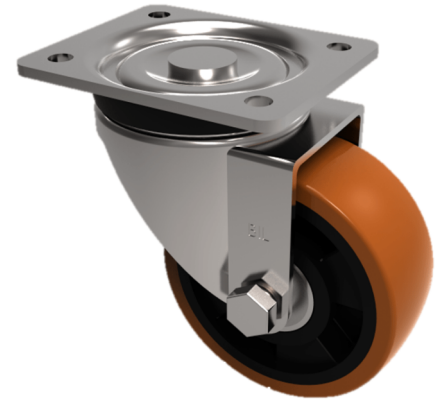


Polyurethane Aluminium Plate Swivel Castor 125mm 300kg Load

Product code: BZP125PABJ

Pressed steel swivel castor with a top plate fixing fitted with a brown polyurethane tyred on aluminium centred wheel with a ball bearing. Wheel diameter 125mm, tread width 40mm, overall height 164mm, plate size 135mm x 110mm, hole centres 105mm x 80mm. Load capacity 300kg.



Diameter (mm)	125
Castor Type	Swivel
Fixing Option	Plate
Height (mm)	164
Wheel Material	Polyurethane on Aluminium
Colour / Shore Hardness	Brown Polyurethane on Aluminium Rim / 93 Shore A
Temperature Resistance	-20 °C TO +70 °C
Bearing Type	Ball
Load Capacity (kg)	300
Tread (mm)	40
Swivel Radius (mm)	118
Plate Size (mm)	135 x 110
Hole Centres (mm)	105 x 80
Top Plate Thickness (mm)	6
Fork Thickness (mm)	4
To Suit Fixing Bolt (mm)	12