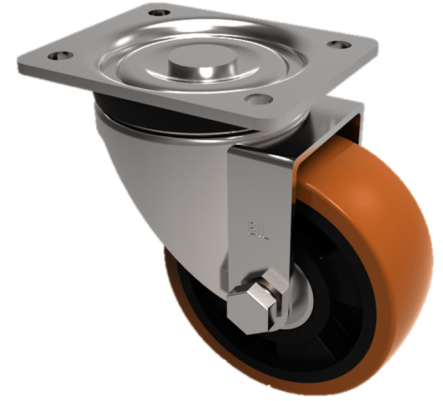


Polyurethane Aluminium Plate Swivel Castor 160mm 350kg Load

Product code: BZMM160PABJ

Pressed steel swivel castor with a top plate fixing fitted with a brown polyurethane tyred aluminium centred ball bearing wheel. Wheel diameter 160mm, tread width 50mm, overall height 195mm, top plate 140mm x 110mm, hole centres 105mm x 80/75mm. Load capacity 350kg.



Diameter (mm)	160
Castor Type	Swivel
Fixing Option	Plate
Height (mm)	195
Wheel Material	Polyurethane on Aluminium
Colour / Shore Hardness	Brown Polyurethane on Aluminium Rim / 93 Shore A
Temperature Resistance	-20 °C TO +70 °C
Bearing Type	Ball
Load Capacity (kg)	350
Tread (mm)	50
Swivel Radius (mm)	140
Plate Size (mm)	135 x 110
Hole Centres (mm)	105 x 80/75
Top Plate Thickness (mm)	3
Fork Thickness (mm)	3
To Suit Fixing Bolt (mm)	10

BIL GROUP LTD

Porte Marsh Road, Calne, Wiltshire, SN11 9BW

Registered in England No: 2603821

VAT Reg: GB572705729

