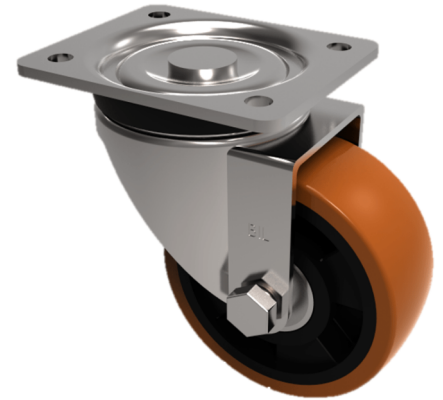


Polyurethane Aluminium Plate Swivel Castor 80mm 200kg Load

Product code: BZH80PABJ

Pressed steel swivel castor with a top plate fixing fitted with a brown polyurethane tyred aluminium centred wheel with ball bearings. Wheel diameter 80mm, tread width 30mm, overall height 110mm, plate size 105mm x 86mm, hole centres 80mm x 60mm. Load capacity 200kg.



Diameter (mm)	80
Castor Type	Swivel
Fixing Option	Plate
Height (mm)	110
Wheel Material	Polyurethane on Aluminium
Colour / Shore Hardness	Brown Polyurethane on Aluminium Rim / 93 Shore A
Temperature Resistance	-20 °C TO +70 °C
Bearing Type	Ball
Load Capacity (kg)	200
Tread (mm)	30
Swivel Radius (mm)	78
Plate Size (mm)	105 x 86
Hole Centres (mm)	80 X 60
Top Plate Thickness (mm)	4
Fork Thickness (mm)	4
To Suit Fixing Bolt (mm)	8

BIL GROUP LTD

Porte Marsh Road, Calne, Wiltshire, SN11 9BW

Registered in England No: 2603821

VAT Reg: GB572705729

