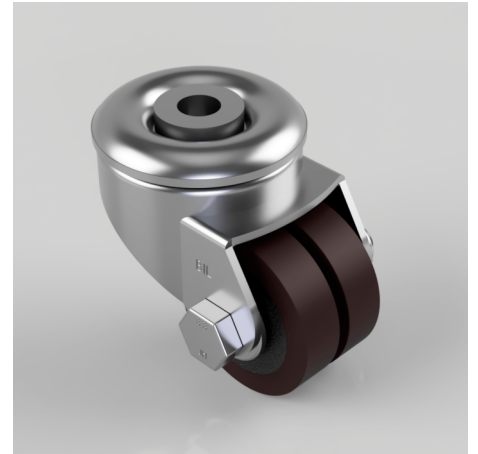


Polyurethane Bolt Hole Swivel Castor 50mm 160kg Load

Product code: 2BZLR50PTBH12

Pressed steel swivel castor with a 12mm bolt hole fitted with 2 x brown polyurethane tyred cast iron centred wheel with plain bore. Wheel diameter 50mm, tread width 2 x 14mm, overall height 73mm, Load capacity 160kg.



Height (mm)	73
Fixing Option	Bolt Hole
Castor Type	Swivel
Load Capacity (kg)	160
Diameter (mm)	50
Bearing Type	Plain
Tread (mm)	14 x 2
To Suit Fixing Bolt (mm)	12
Swivel Radius (mm)	56
Wheel Material	Polyurethane on Cast Iron
Colour / Shore Hardness	Brown Polyurethane on Cast Iron Rim / 94 Shore A
Fork Thickness (mm)	2.5
Head Dia (mm)	60
Temperature Resistance	-20 °C TO +80 °C
Head Dia (mm)	60