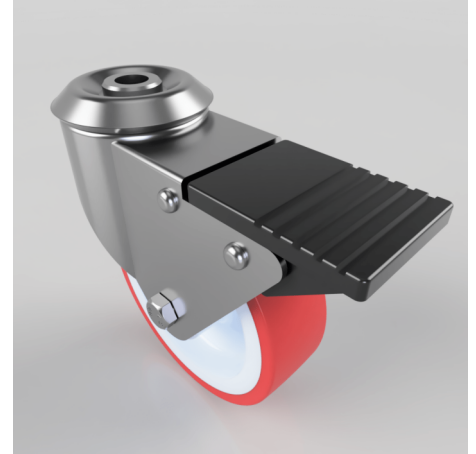


Polyurethane Bolt Hole Swivel Castor Brake 100mm 125kg Load

Product code: BZBC100NPBH12SWB

Pressed steel swivel castor with a bolt hole fixing fitted with a red polyurethane tyre on white nylon centred wheel with a plain bore and total lock brake. Wheel diameter 100mm, tread width 30mm, overall height 126mm, bolt hole 12mm. Load capacity 125kg.



Diameter (mm)	100
Fixing Option	Bolt Hole
Castor Type	Swivel with Total Lock Brake
Head Dia (mm)	60
Height (mm)	126
Bearing Type	Plain
Swivel Radius (mm)	115
Wheel Material	Polyurethane on Nylon
Colour / Shore Hardness	Red Polyurethane on Nylon Rim / 96 Shore A
Fork Thickness (mm)	2
Temperature Resistance	-20 °C TO +70 °C
To Suit Fixing Bolt (mm)	12
Tread (mm)	30
Load Capacity (kg)	125

BIL GROUP LTD

Porte Marsh Road, Calne, Wiltshire, SN11 9BW

Registered in England No: 2603821

VAT Reg: GB572705729

