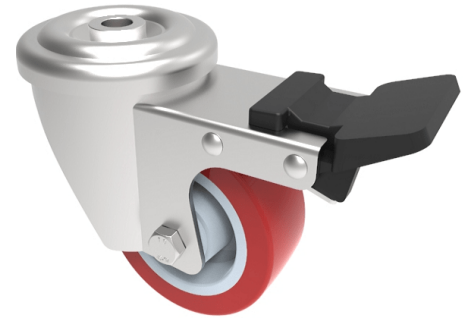


Polyurethane Bolt Hole Swivel Castor Brake 80mm 190kg Load

Product code: SSXM80NPBH12SWB



Grade 304 Stainless steel swivel castor with a 12mm bolt hole fixing fitted with a red polyurethane tyre white nylon centred wheel with a plain bore and total lock brake. Wheel diameter 80mm, tread width 33mm, overall height 108mm, Load capacity 190kg.

Diameter (mm)	80
Fixing Option	Bolt Hole
Castor Type	Swivel with Total Lock Brake
Height (mm)	110
Wheel Material	Polyurethane on Nylon
Colour / Shore Hardness	Red Polyurethane on Nylon Rim / 96 Shore A
Bearing Type	Plain
Tread (mm)	30
Fork Thickness (mm)	2.5
To Suit Fixing Bolt (mm)	12
Load Capacity (kg)	190
Temperature Resistance	-30 °C to +130 °C
Head Dia (mm)	78
Swivel Radius (mm)	125

BIL GROUP LTD

Porte Marsh Road, Calne, Wiltshire, SN11 9BW

Registered in England No: 2603821

VAT Reg: GB572705729

