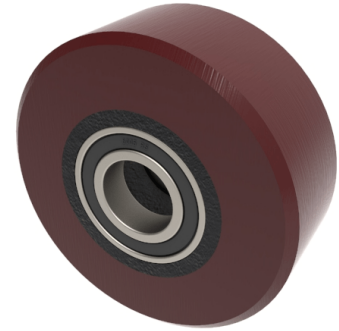


## Polyurethane Cast Iron 100mm Ball Bearing Wheel 300kg Load

**Product code: BZPH100WPTBJM25**



Brown polyurethane wheel on a cast iron centre with ball journal bearings. Wheel diameter 100mm, tread width 40mm, bore 25mm, hub 40mm. Load capacity 300kg

Bearing Type	Ball
Bore Size (mm)	25
Diameter (mm)	100
Hub Width (mm)	40
Load Capacity (kg)	300
Tread (mm)	40
Wheel Material	Polyurethane on Cast Iron
Colour / Shore Hardness	Brown Polyurethane on Cast Iron Rim / 94 Shore A
Temperature Resistance	-20 °C TO +80 °C

### BIL GROUP LTD

Porte Marsh Road, Calne, Wiltshire, SN11 9BW

Registered in England No: 2603821

VAT Reg: GB572705729

