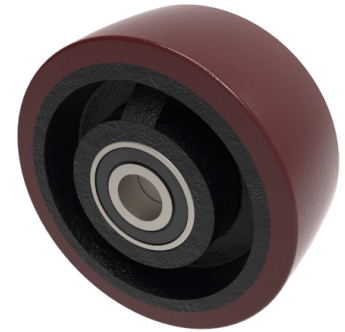


## Polyurethane Cast Iron 125mm Ball Bearing Wheel 500kg Load

**Product code: BZXH125WPTBJM20/50**



Brown Polyurethane tyred cast iron centred wheel with ball journal bearings. Wheel diameter 125mm, tread width 50mm, hub 50mm, bore 20mm. Load capacity 500kg.

Bearing Type	Ball
Bore Size (mm)	20
Diameter (mm)	125
Hub Width (mm)	50
Load Capacity (kg)	500
Tread (mm)	50
Wheel Material	Polyurethane on Cast Iron
Colour / Shore Hardness	Brown Polyurethane on Cast Iron Rim / 94 Shore A
Temperature Resistance	-20 °C TO +80 °C

### BIL GROUP LTD

Porte Marsh Road, Calne, Wiltshire, SN11 9BW

Registered in England No: 2603821

VAT Reg: GB572705729

