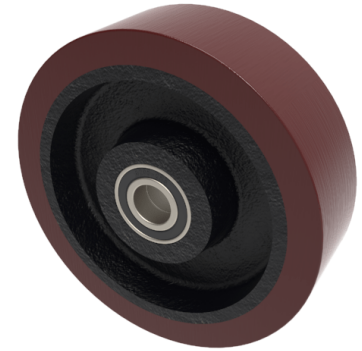


Polyurethane Cast Iron 150mm Ball Bearing Wheel 1150kg Load

Product code: BZXPH150WPTBJM30

Brown polyurethane tyred wheel on cast iron centre with a ball bearing. Wheel diameter 150mm, tread width 75mm, bore size 30mm, hub length 82mm. Load capacity 1150kgs.



Bearing Type	Ball
Bore Size (mm)	30
Diameter (mm)	150
Hub Width (mm)	82
Load Capacity (kg)	1150
Tread (mm)	75
Wheel Material	Polyurethane on Cast Iron
Colour / Shore Hardness	Brown Polyurethane on Cast Iron Rim / 94 Shore A
Temperature Resistance	-20 °C TO +80 °C

BIL GROUP LTD

Porte Marsh Road, Calne, Wiltshire, SN11 9BW

Registered in England No: 2603821

VAT Reg: GB572705729

