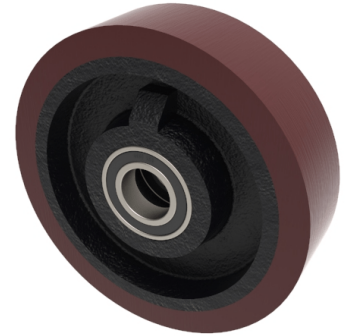


Polyurethane Cast Iron 150mm Ball Bearing Wheel 500kg Load

Product code: BZMH150WPTBJM254

150mm diameter polyurethane tyred on a cast iron centred wheel with a ball bearing. Tread width 40mm, bore 25.4mm, hub 40mm. Load capacity 500kg.



| | |
|-------------------------|--|
| Bearing Type | Ball |
| Bore Size (mm) | 25.4 |
| Diameter (mm) | 150 |
| Hub Width (mm) | 40 |
| Load Capacity (kg) | 500 |
| Tread (mm) | 40 |
| Wheel Material | Polyurethane on Cast Iron |
| Colour / Shore Hardness | Brown Polyurethane on Cast Iron Rim / 94 Shore A |
| Temperature Resistance | -20 °C TO +80 °C |

BIL GROUP LTD

Porte Marsh Road, Calne, Wiltshire, SN11 9BW

Registered in England No: 2603821

VAT Reg: GB572705729

