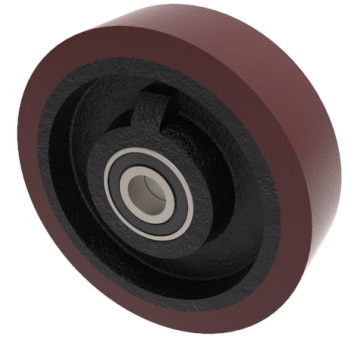


## Polyurethane Cast Iron 150mm Ball Bearing Wheel 500kg Load

**Product code: BZMH150WPTBJM20**



150mm diameter polyurethane tyred on a cast iron centred wheel with a ball bearing. Tread width 40mm, bore 20mm, hub 40mm. Load capacity 500kg.

Bearing Type	Ball
Bore Size (mm)	20
Diameter (mm)	150
Hub Width (mm)	40
Load Capacity (kg)	500
Tread (mm)	40
Wheel Material	Polyurethane on Cast Iron
Colour / Shore Hardness	Brown Polyurethane on Cast Iron Rim / 94 Shore A
Temperature Resistance	-20 °C TO +80 °C

### BIL GROUP LTD

Porte Marsh Road, Calne, Wiltshire, SN11 9BW

Registered in England No: 2603821

VAT Reg: GB572705729

