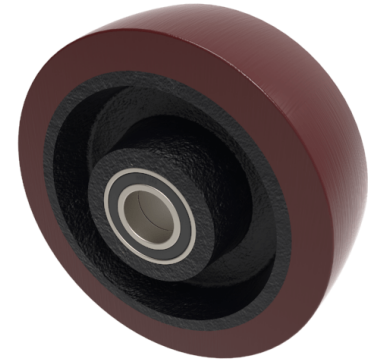


Polyurethane Cast Iron 160mm Ball Bearing Wheel 750kg Load

Product code: BZXH160WPTBJM254

Brown polyurethane wheel on a cast iron centre with ball bearings. Wheel diameter 160mm, tread width 50mm, bore 25.4mm, hub 60mm. Load capacity 750kg.



Bearing Type	Ball
Bore Size (mm)	25.4
Diameter (mm)	160
Hub Width (mm)	60
Load Capacity (kg)	750
Tread (mm)	50
Wheel Material	Polyurethane on Cast Iron
Colour / Shore Hardness	Brown Polyurethane on Cast Iron Rim / 94 Shore A
Temperature Resistance	-20 °C TO +80 °C

BIL GROUP LTD

Porte Marsh Road, Calne, Wiltshire, SN11 9BW

Registered in England No: 2603821

VAT Reg: GB572705729

