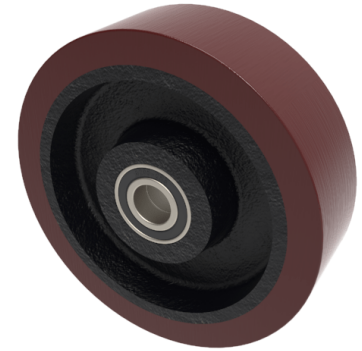


Polyurethane Cast Iron 160mm Ball Bearing Wheel 750kg Load

Product code: BZXH160WPTBJM20

Brown polyurethane wheel on a cast iron centre with ball bearings. Wheel diameter 160mm, tread width 50mm, bore 20mm, hub 60mm. Load capacity 750kg.



| | |
|-------------------------|--|
| Bearing Type | Ball |
| Bore Size (mm) | 20 |
| Diameter (mm) | 160 |
| Hub Width (mm) | 60 |
| Load Capacity (kg) | 750 |
| Tread (mm) | 50 |
| Wheel Material | Polyurethane on Cast Iron |
| Colour / Shore Hardness | Brown Polyurethane on Cast Iron Rim / 94 Shore A |
| Temperature Resistance | -20 °C TO +80 °C |

BIL GROUP LTD

Porte Marsh Road, Calne, Wiltshire, SN11 9BW

Registered in England No: 2603821

VAT Reg: GB572705729

