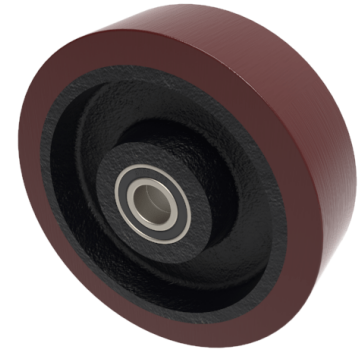


Polyurethane Cast Iron 200mm Ball Bearing Wheel 1000kg Load

Product code: BZXH200WPTBJM254



Brown polyurethane tyred wheel on cast iron centre with a ball bearing. Wheel diameter 200mm, tread width 50mm, bore size 25.4mm, hub length 60mm. Load capacity 1000kgs.

Bearing Type	Ball
Bore Size (mm)	25.4
Diameter (mm)	200
Hub Width (mm)	60
Load Capacity (kg)	1000
Tread (mm)	50
Wheel Material	Polyurethane on Cast Iron
Colour / Shore Hardness	Brown Polyurethane on Cast Iron Rim / 94 Shore A
Temperature Resistance	-20 °C TO +80 °C

BIL GROUP LTD

Porte Marsh Road, Calne, Wiltshire, SN11 9BW

Registered in England No: 2603821

VAT Reg: GB572705729

