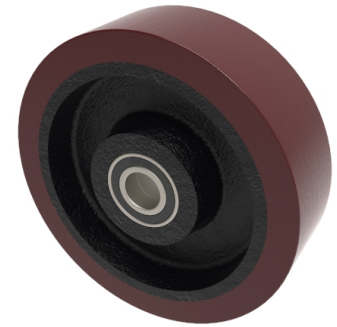


Polyurethane Cast Iron 200mm Ball Bearing Wheel 1300kg Load

Product code: BZXH200WPTBJM254WT



Brown polyurethane tyred wheel on cast iron centre with a ball bearing. Wheel diameter 200mm, tread width 60mm, bore size 25.4mm, hub length 60mm. Load capacity 1300kgs.

Bearing Type	Ball
Bore Size (mm)	25.4
Diameter (mm)	200
Hub Width (mm)	60
Load Capacity (kg)	1300
Tread (mm)	60
Wheel Material	Polyurethane on Cast Iron
Colour / Shore Hardness	Brown Polyurethane on Cast Iron Rim / 94 Shore A
Temperature Resistance	-20 °C TO +80 °C

BIL GROUP LTD

Porte Marsh Road, Calne, Wiltshire, SN11 9BW

Registered in England No: 2603821

VAT Reg: GB572705729

