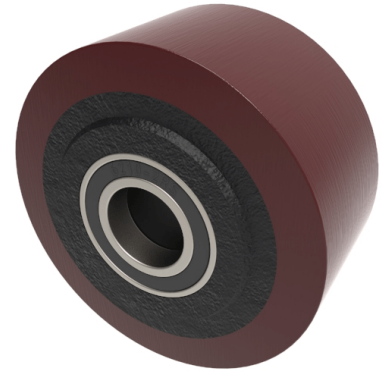


## Polyurethane Cast Iron 200mm Ball Bearing Wheel 2000kg Load

**Product code: BZXHX200WPTBJM50**

Brown polyurethane tyred on cast iron centred wheel fitted with ball journal bearings, 200mm overall wheel diameter, 100mm tread width, 100mm hub length, bore size 50mm, 2000kgs load capacity.



Bearing Type	Ball
Bore Size (mm)	50
Diameter (mm)	200
Hub Width (mm)	100
Load Capacity (kg)	2000
Tread (mm)	100
Wheel Material	Polyurethane on Cast Iron
Colour / Shore Hardness	Brown Polyurethane on Cast Iron Rim / 94 Shore A
Temperature Resistance	-20 °C TO +80 °C

### BIL GROUP LTD

Porte Marsh Road, Calne, Wiltshire, SN11 9BW

Registered in England No: 2603821

VAT Reg: GB572705729

