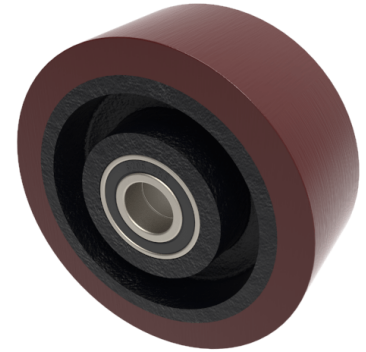


## Polyurethane Cast Iron 250mm Ball Bearing Wheel 1200kg Load

**Product code: BZPMH250WPTBJM25**



Brown polyurethane tyred on cast iron centred wheel with ball bearing. Diameter 250mm, tread width 50mm, bore size 25mm, hub length 60mm. Load capacity 1200kg.

Bearing Type	Ball
Bore Size (mm)	25
Diameter (mm)	250
Hub Width (mm)	60
Load Capacity (kg)	1200
Tread (mm)	50
Wheel Material	Polyurethane on Cast Iron
Colour / Shore Hardness	Brown Polyurethane on Cast Iron Rim / 94 Shore A
Temperature Resistance	-20 °C TO +80 °C

### BIL GROUP LTD

Porte Marsh Road, Calne, Wiltshire, SN11 9BW

Registered in England No: 2603821

VAT Reg: GB572705729

