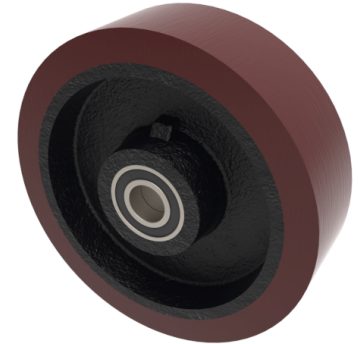


Polyurethane Cast Iron 250mm Ball Bearing Wheel 1800kg Load

Product code: BZXPH250WPTBJM30

Brown polyurethane tyre on cast iron centred wheel fitted with ball bearings, wheel diameter 250mm, tread width 75mm hub length 82mm, bore size 30mm, load capacity 1800kgs



Bearing Type	Ball
Bore Size (mm)	30
Diameter (mm)	250
Hub Width (mm)	82
Load Capacity (kg)	1800
Tread (mm)	75
Wheel Material	Polyurethane on Nylon
Colour / Shore Hardness	Brown Polyurethane on Cast Iron Rim / 94 Shore A
Temperature Resistance	-20 °C TO +80 °C

BIL GROUP LTD

Porte Marsh Road, Calne, Wiltshire, SN11 9BW

Registered in England No: 2603821

VAT Reg: GB572705729

