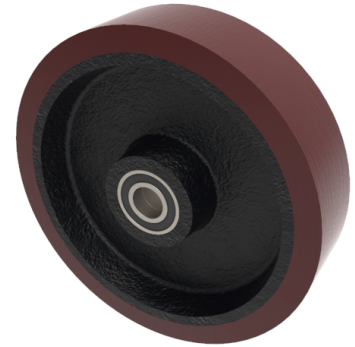


Polyurethane Cast Iron 300mm Ball Bearing Wheel 1400kg Load

Product code: BZPMH300WPTBJM25

Brown polyurethane tyre on cast iron centred wheel with ball bearing. Diameter 300mm, tread width 50mm, bore size 25mm, hub length 60mm. Load capacity 1400kg.



Bearing Type	Ball
Bore Size (mm)	25
Diameter (mm)	300
Hub Width (mm)	60
Load Capacity (kg)	1400
Tread (mm)	50
Wheel Material	Polyurethane on Cast Iron
Colour / Shore Hardness	Brown Polyurethane on Cast Iron Rim / 94 Shore A
Temperature Resistance	-20 °C TO +80 °C

BIL GROUP LTD

Porte Marsh Road, Calne, Wiltshire, SN11 9BW

Registered in England No: 2603821

VAT Reg: GB572705729

