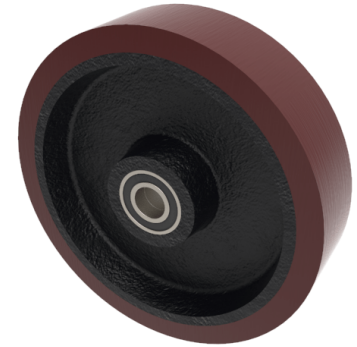


## Polyurethane Cast Iron 300mm Ball Bearing Wheel 2200kg Load

**Product code: BZH300WPTBJM30**



Brown polyurethane tyred on cast iron centred wheel with a ball bearing. Diameter 300mm, tread width 75mm, bore size 30mm, hub length 82mm. Load capacity 2200kg.

Bearing Type	Ball
Bore Size (mm)	30
Diameter (mm)	300
Hub Width (mm)	82
Load Capacity (kg)	2200
Tread (mm)	75
Wheel Material	Polyurethane on Cast Iron
Colour / Shore Hardness	Brown Polyurethane on Cast Iron Rim / 94 Shore A
Temperature Resistance	-20 °C TO +80 °C

### BIL GROUP LTD

Porte Marsh Road, Calne, Wiltshire, SN11 9BW

Registered in England No: 2603821

VAT Reg: GB572705729

