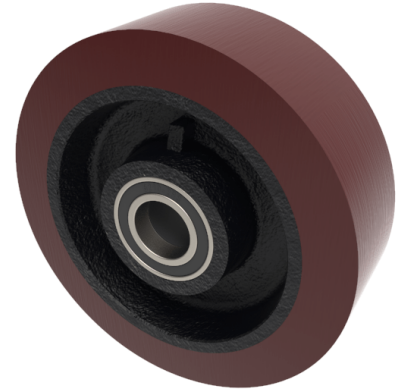


Polyurethane Cast Iron 300mm Ball Bearing Wheel 3000kg Load

Product code: BZXHX300WPTBJM50

Brown polyurethane tyred on cast iron centred wheel fitted with ball journal bearings, 300mm overall wheel diameter, 100mm tread width, 100mm hub length, 3000kgs load capacity.



Bearing Type	Ball
Bore Size (mm)	50
Diameter (mm)	300
Hub Width (mm)	100
Load Capacity (kg)	3000
Tread (mm)	100
Wheel Material	Polyurethane on Cast Iron
Colour / Shore Hardness	Brown Polyurethane on Cast Iron Rim / 94 Shore A
Temperature Resistance	-20 °C TO +80 °C

BIL GROUP LTD

Porte Marsh Road, Calne, Wiltshire, SN11 9BW

Registered in England No: 2603821

VAT Reg: GB572705729

