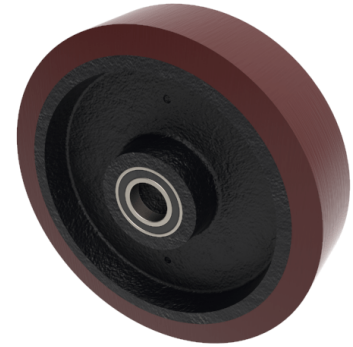


## Polyurethane Cast Iron 400mm Ball Bearing Wheel 3500kg Load

**Product code: BZMH400WPTBJM50**



Brown polyurethane on cast iron wheel with ball bearings (bearing number 6210). Wheel diameter 400mm, tread width 100mm, bore 50mm, hub 108mm. Load capacity 3500kg.

Bearing Type	Ball
Bore Size (mm)	50
Diameter (mm)	400
Hub Width (mm)	108
Load Capacity (kg)	3500
Tread (mm)	100
Wheel Material	Polyurethane on Cast Iron
Colour / Shore Hardness	Brown Polyurethane on Cast Iron Rim / 94 Shore A
Temperature Resistance	-20 °C TO +80 °C

### BIL GROUP LTD

Porte Marsh Road, Calne, Wiltshire, SN11 9BW

Registered in England No: 2603821

VAT Reg: GB572705729

