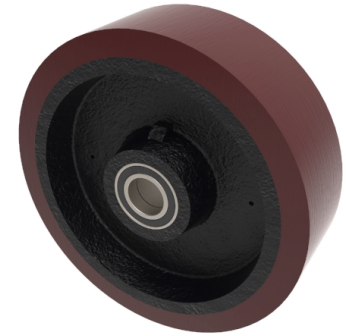


Polyurethane Cast Iron 400mm Ball Bearing Wheel 4600kg Load

Product code: BZXHX400WPTBJM50



Brown 92 Shore A polyurethane on cast iron wheel with ball bearings. Wheel diameter 400mm, tread width 125mm, bore 50mm, hub 125mm. Load capacity 4600kg.

Bearing Type	Ball
Bore Size (mm)	50
Diameter (mm)	400
Hub Width (mm)	125
Load Capacity (kg)	4600
Tread (mm)	125
Wheel Material	Polyurethane on Cast Iron
Colour / Shore Hardness	Brown Polyurethane on Cast Iron Rim / 94 Shore A
Temperature Resistance	-20 °C TO +80 °C

BIL GROUP LTD

Porte Marsh Road, Calne, Wiltshire, SN11 9BW

Registered in England No: 2603821

VAT Reg: GB572705729

