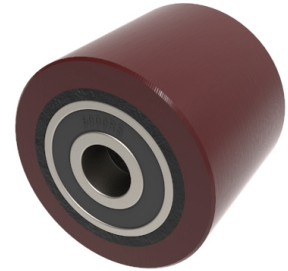


## Polyurethane Cast Iron 40mm Ball Bearing Wheel 100kg Load

**Product code: BZH40WPTBJM10**



Brown polyurethane wheel on a cast iron centre with ball bearings. Wheel diameter 40mm, tread width 35mm, bore 10mm, hub length 35mm. Load capacity 100kg.

Bearing Type	Ball
Bore Size (mm)	10
Diameter (mm)	40
Hub Width (mm)	35
Load Capacity (kg)	100
Tread (mm)	35
Wheel Material	Polyurethane on Cast Iron
Colour / Shore Hardness	Brown Polyurethane on Cast Iron Rim / 94 Shore A
Temperature Resistance	-20 °C TO +80 °C

### BIL GROUP LTD

Porte Marsh Road, Calne, Wiltshire, SN11 9BW

Registered in England No: 2603821

VAT Reg: GB572705729

