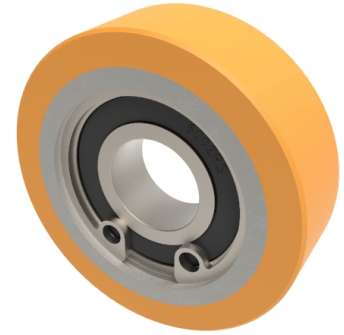


Polyurethane Cast Iron 48mm Ball Bearing Wheel 110kg Load

Product code: BZH4815WPTBJM15



Yellow polyurethane tyred steel centred roller. Wheel diameter 48mm, tread width 15mm, hub width 9mm, ball bearings 15mm. Load capacity 110kg.

Bearing Type	Ball
Bore Size (mm)	15
Diameter (mm)	48
Hub Width (mm)	9
Load Capacity (kg)	110
Tread (mm)	15
Wheel Material	Polyurethane on Cast Iron
Colour / Shore Hardness	Brown Polyurethane on Cast Iron Rim / 94 Shore A
Temperature Resistance	-20 °C TO +80 °C

BIL GROUP LTD

Porte Marsh Road, Calne, Wiltshire, SN11 9BW

Registered in England No: 2603821

VAT Reg: GB572705729

