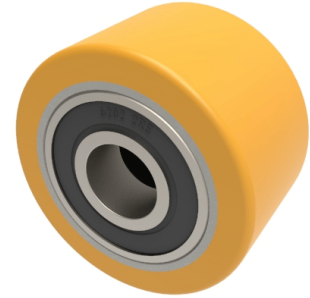


Polyurethane Cast Iron 50mm Ball Bearing Wheel 120kg Load

Product code: BZH50WPTBJM15



Brown polyurethane wheel on a cast iron centre with ball bearings. Wheel diameter 50mm, tread width 30mm, bore 15mm, hub length 30mm. Load capacity 120kg.

Bearing Type	Ball
Bore Size (mm)	15
Diameter (mm)	50
Hub Width (mm)	30
Load Capacity (kg)	120
Tread (mm)	30
Wheel Material	Polyurethane on Cast Iron
Colour / Shore Hardness	Brown Polyurethane on Cast Iron Rim / 94 Shore A
Temperature Resistance	-20 °C TO +80 °C

BIL GROUP LTD

Porte Marsh Road, Calne, Wiltshire, SN11 9BW

Registered in England No: 2603821

VAT Reg: GB572705729

