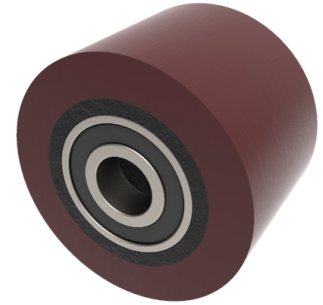


## Polyurethane Cast Iron 50mm Ball Bearing Wheel 120kg Load

**Product code: BZH50WPTBJM12**



Brown polyurethane wheel on a cast iron centre with ball bearings. Wheel diameter 50mm, tread width 35mm, bore 12mm, hub length 35mm. Load capacity 120kg.

Bearing Type	Ball
Bore Size (mm)	12
Diameter (mm)	50
Hub Width (mm)	35
Load Capacity (kg)	120
Tread (mm)	35
Wheel Material	Polyurethane on Cast Iron
Colour / Shore Hardness	Brown Polyurethane on Cast Iron Rim / 94 Shore A
Temperature Resistance	-20 °C TO +80 °C

### BIL GROUP LTD

Porte Marsh Road, Calne, Wiltshire, SN11 9BW

Registered in England No: 2603821

VAT Reg: GB572705729

