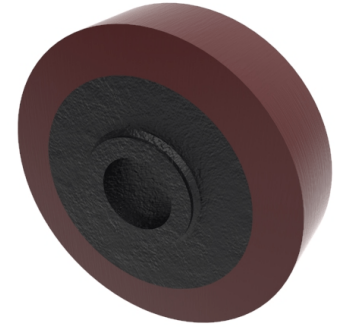


Polyurethane Cast Iron 50mm Plain Bore 80kg Load

Product code: BZH50WPT



Polyurethane on cast iron wheel. Wheel diameter 50mm, tread width 14mm, bore size 12mm, hub length 17mm. Load capacity 80kg.

Bearing Type	Plain
Bore Size (mm)	12
Diameter (mm)	50
Hub Width (mm)	17
Load Capacity (kg)	80
Tread (mm)	14
Wheel Material	Polyurethane on Cast Iron
Colour / Shore Hardness	Brown Polyurethane on Cast Iron Rim / 94 Shore A
Temperature Resistance	-20 °C TO +80 °C