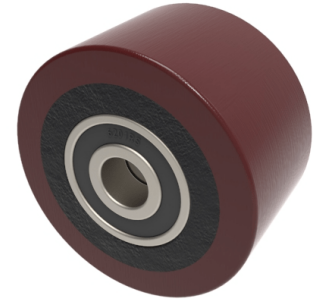


Polyurethane Cast Iron 60mm Ball Bearing Wheel 180kg Load

Product code: BZH60WPTBJM12



Brown polyurethane tyre with a cast iron centred wheel with ball journal bearings. Diameter 60mm, tread width 35mm, bore size 12mm, hub length 35mm. Load capacity 180kg.

Bearing Type	Ball
Bore Size (mm)	12
Diameter (mm)	60
Hub Width (mm)	35
Load Capacity (kg)	180
Tread (mm)	35
Wheel Material	Polyurethane on Cast Iron
Colour / Shore Hardness	Brown Polyurethane on Cast Iron Rim / 94 Shore A
Temperature Resistance	-20 °C TO +80 °C

BIL GROUP LTD

Porte Marsh Road, Calne, Wiltshire, SN11 9BW

Registered in England No: 2603821

VAT Reg: GB572705729

