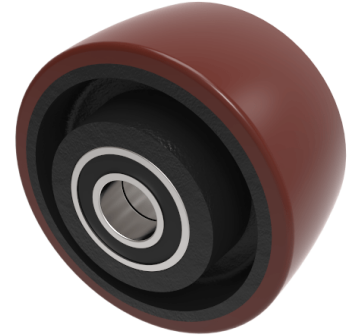


Polyurethane Cast Iron 75mm Ball Bearing Wheel 300kg Load

Product code: BZH75WPTBJM15



Brown polyurethane tyred cast iron centred wheel. Wheel diameter 75mm, tread width 40mm, hub with 40mm, Bore size 15mm, Load capacity 300kg.

Bearing Type	Ball
Bore Size (mm)	15
Diameter (mm)	75
Hub Width (mm)	40
Load Capacity (kg)	300
Tread (mm)	40
Wheel Material	Polyurethane on Cast Iron
Colour / Shore Hardness	Brown Polyurethane on Cast Iron Rim / 94 Shore A
Temperature Resistance	-20 °C TO +80 °C

BIL GROUP LTD

Porte Marsh Road, Calne, Wiltshire, SN11 9BW

Registered in England No: 2603821

VAT Reg: GB572705729

