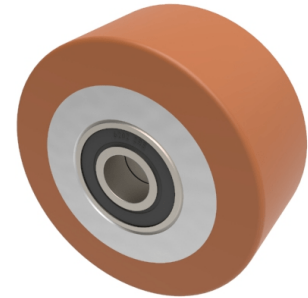


Polyurethane Cast Iron 80mm Ball Bearing Wheel 250kg Load

Product code: BZH8036WPTBJM15



Brown polyurethane tyre on cast iron centred wheel with ball bearings. Diameter 80mm, tread width 36mm, bore size 15mm, hub length 36mm. Load capacity 250kg.

Bearing Type	Ball
Bore Size (mm)	15
Diameter (mm)	80
Hub Width (mm)	36
Load Capacity (kg)	250
Tread (mm)	36
Wheel Material	Polyurethane on Cast Iron
Colour / Shore Hardness	Brown Polyurethane on Cast Iron Rim / 94 Shore A
Temperature Resistance	-20 °C TO +80 °C

BIL GROUP LTD

Porte Marsh Road, Calne, Wiltshire, SN11 9BW

Registered in England No: 2603821

VAT Reg: GB572705729

