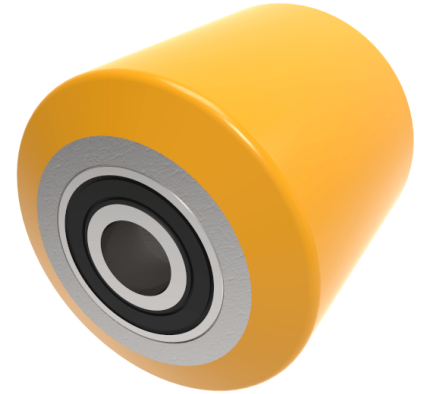


Polyurethane Cast Iron 82mm Ball Bearing Wheel 600kg Load

Product code: BZH8260WPTBJM25

82mm polyurethane tyred on steel centred pallet roller with 25mm 2RS ball bearings tread width 60mm. Load capacity 600kg.



Wheel Material	Polyurethane on Steel
Diameter (mm)	82
Load Capacity (kg)	600
Bearing Type	Ball
Bore Size (mm)	20
Tread (mm)	60
Hub Width (mm)	60
Colour / Shore Hardness	Yellow Polyurethane on Steel Rim / 94 Shore A
Temperature Resistance	-20 °C TO +80 °C

BIL GROUP LTD

Porte Marsh Road, Calne, Wiltshire, SN11 9BW

Registered in England No: 2603821

VAT Reg: GB572705729

