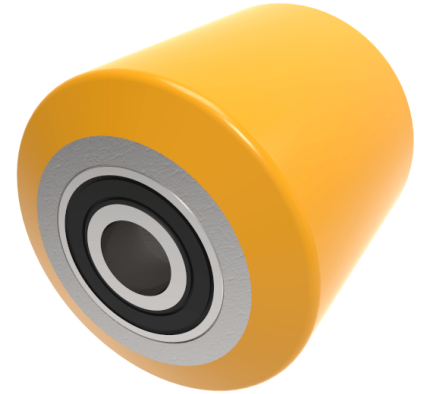


Polyurethane Cast Iron 82mm Ball Bearing Wheel 600kg Load

Product code: BZH8260WPTBJM20

82mm polyurethane tyred on steel centred pallet roller with 20mm 2RS ball bearings tread width 60mm. Load capacity 600kg.



| | |
|-------------------------|---|
| Wheel Material | Polyurethane on Steel |
| Diameter (mm) | 82 |
| Load Capacity (kg) | 600 |
| Bearing Type | Ball |
| Bore Size (mm) | 20 |
| Tread (mm) | 60 |
| Hub Width (mm) | 60 |
| Colour / Shore Hardness | Yellow Polyurethane on Steel Rim / 94 Shore A |
| Temperature Resistance | -20 °C TO +80 °C |

BIL GROUP LTD

Porte Marsh Road, Calne, Wiltshire, SN11 9BW

Registered in England No: 2603821

VAT Reg: GB572705729

