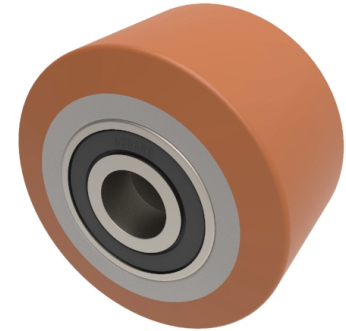


## Polyurethane Cast Iron 82mm Ball Bearing Wheel 650kg Load

**Product code: BZH8250WPTBJM20**



82mm brown polyurethane tyred on steel centred pallet roller with 20mm 2RS ball bearings tread width 50mm. Load capacity 650kg.

Wheel Material	Polyurethane on Steel
Diameter (mm)	82
Load Capacity (kg)	650
Bearing Type	Ball
Bore Size (mm)	20
Tread (mm)	50
Hub Width (mm)	50
Colour / Shore Hardness	Brown Polyurethane on Steel Rim / 94 Shore A
Temperature Resistance	-20 °C TO +80 °C

### BIL GROUP LTD

Porte Marsh Road, Calne, Wiltshire, SN11 9BW

Registered in England No: 2603821

VAT Reg: GB572705729

