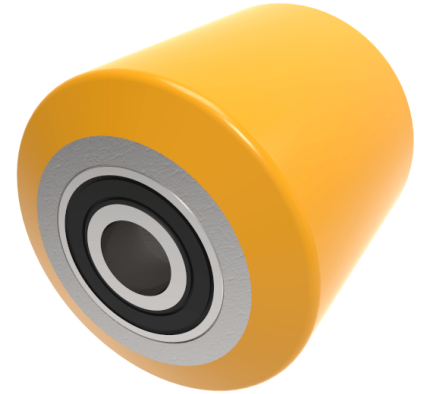


## Polyurethane Cast Iron 82mm Ball Bearing Wheel 850kg Load

**Product code: BZH8290WPTBJM20**

82mm brown polyurethane tyred on steel centred pallet roller with 20mm 6204 2RS ball bearings tread width 90mm. Load capacity 850kg.



Wheel Material	Polyurethane on Steel
Diameter (mm)	82
Load Capacity (kg)	850
Bearing Type	Ball
Bore Size (mm)	20
Tread (mm)	90
Hub Width (mm)	90
Colour / Shore Hardness	Brown Polyurethane on Steel Rim / 94 Shore A
Temperature Resistance	-20 °C TO +80 °C

### BIL GROUP LTD

Porte Marsh Road, Calne, Wiltshire, SN11 9BW

Registered in England No: 2603821

VAT Reg: GB572705729

